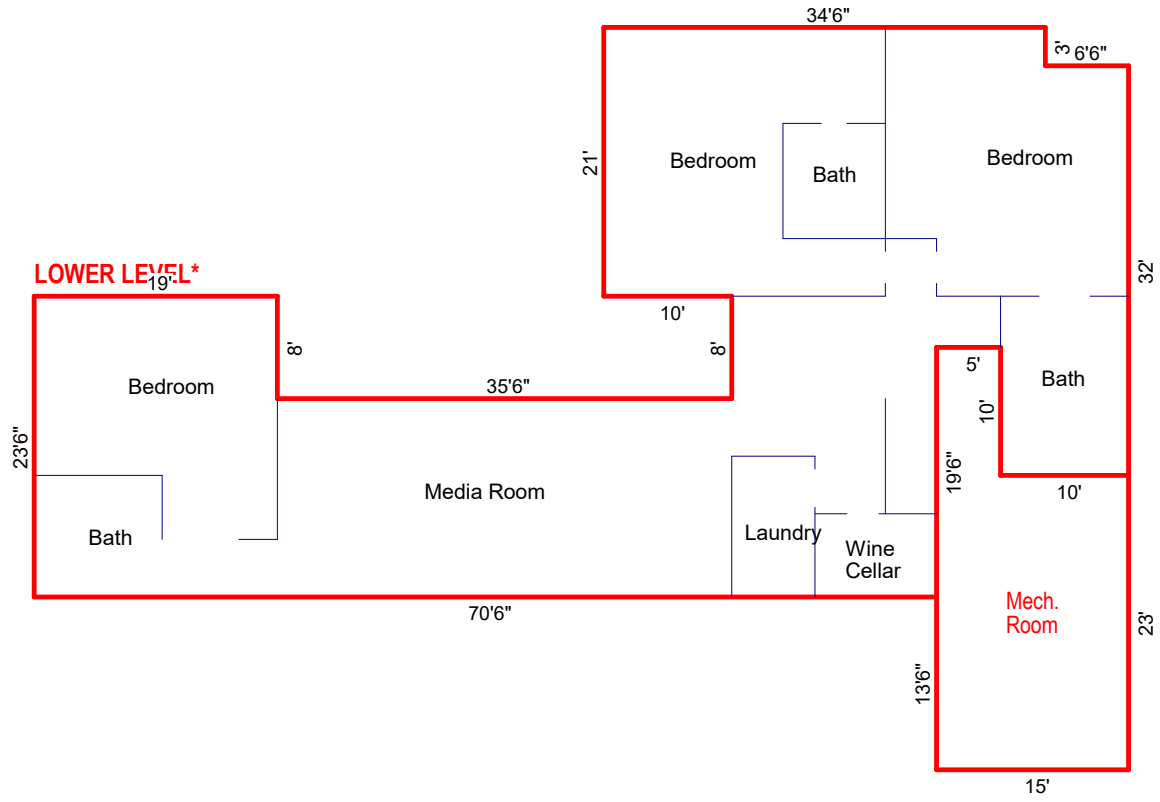


MAIN LEVEL*

21	x	34.5	=	724.5	
24	x	85.5	=	2052	
3	x	90	=	270	
7	x	41.5	=	290.5	
20	x	38	=	760	
5	x	28	=	140	
6	x	34	=	204	
7	x	28	=	196	
Subtotal*				4637	SF
Total*				4637	SF
* Total G.L.A.				4637	SF



LOWER LEVEL*

3	x	34.5	=	103.5
18	x	41	=	738
8	x	19	=	152
4	x	31	=	124
4	x	16	=	64
10	x	10	=	100
15.5	x	70.5	=	1092.75
Subtotal*				2374.25 SF

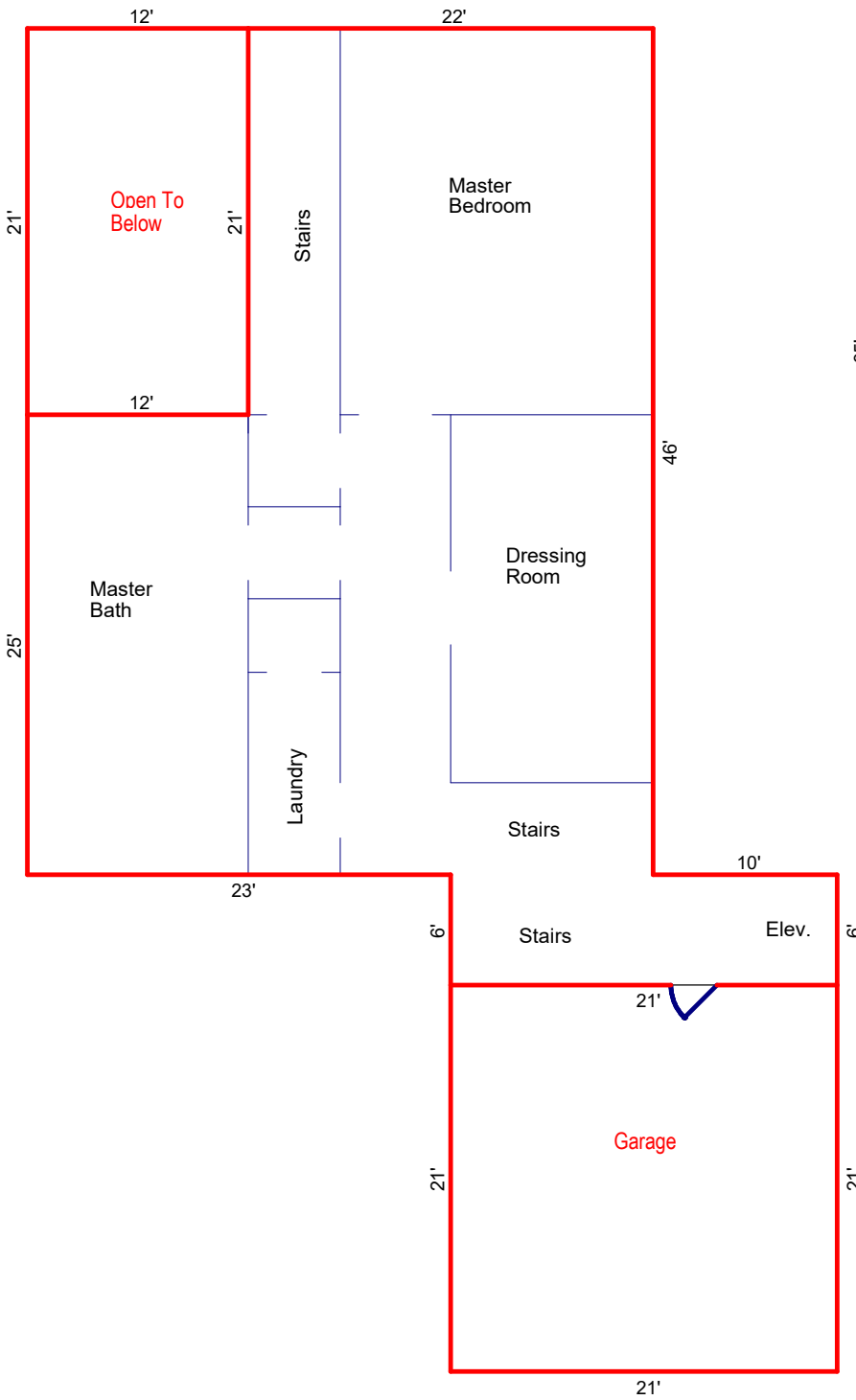
Mech. Room

5	x	33	=	165
10	x	23	=	230
Subtotal				395 SF

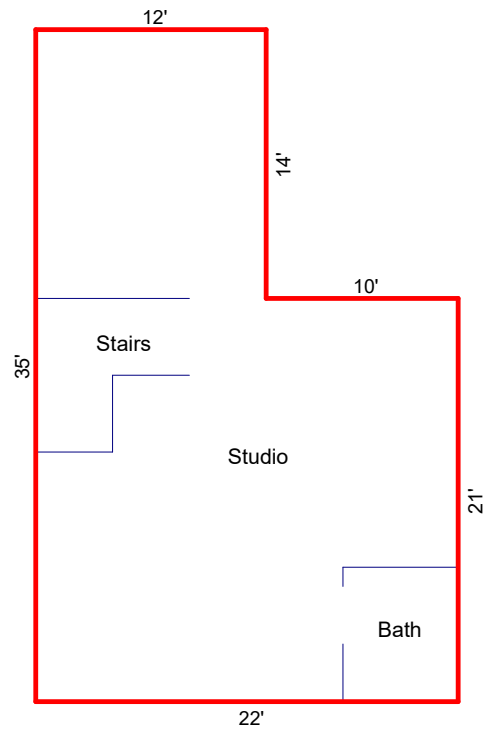
Total* **2374.25 SF**

* Total G.L.A. 2374.25 SF

SECOND FLOOR*



THIRD FLOOR*



SECOND FLOOR*

12	x	25	=	300	
11	x	46	=	506	
11	x	52	=	572	
10	x	6	=	60	
Subtotal*				1438	SF

Garage

21	x	21	=	441	SF
----	---	----	---	-----	-----------

Open To Below

12	x	21	=	252	SF
Total*				1438	SF

THIRD FLOOR*

12	x	35	=	420	
10	x	21	=	210	
Subtotal*				630	SF
Total*				630	SF

*** Total G.L.A. 2068 SF**